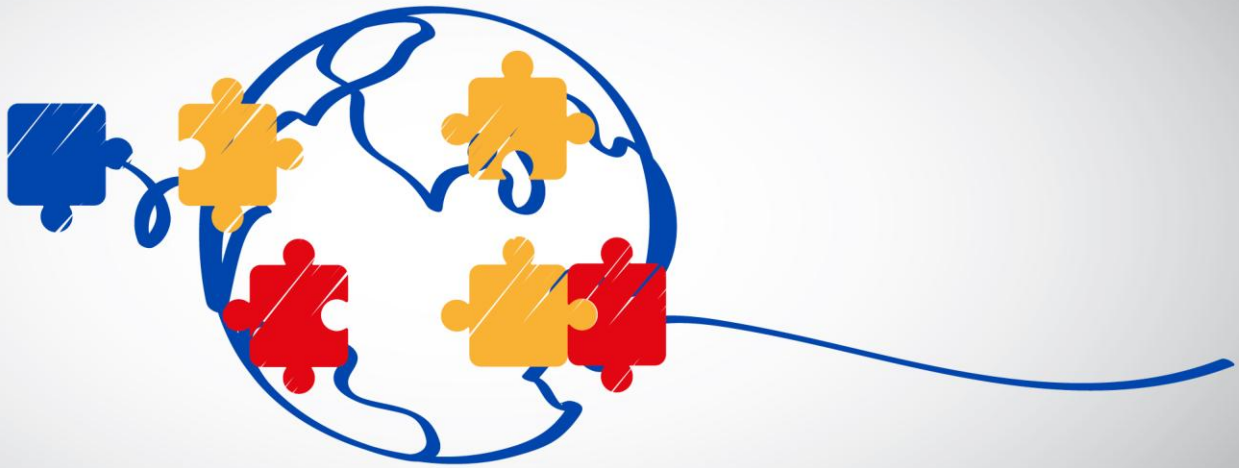


LISBON



**06-07 MAY
2026**

MANDATORY APPLICATION
yoU@B > Punto Blu > Menù
> In-Company Training

A unique opportunity to gain better understanding of employers and the job market in different Countries, join hands-on projects, engage with company representatives to dive deep into their functional areas, career possibilities, and internship opportunities.

HOSTING COMPANIES

Closer Consulting, EDP, Italian Chamber of Commerce for Portugal

REQUIREMENTS AND HOW TO APPLY

This program is dedicated to 20 students with strong interest in the Portuguese job market, fluent in English, curious and open-minded. Info on specific requirements are available [here](#).

- >To apply: upload your CV in a PDF format and record a short video interview (incomplete applications will not be considered).
- >Final ranking will be communicated via e-mail on **13 April 2026**.

COSTS

Participants are responsible for the costs mentioned in the [website](#).

