

**EVALUATION OF  
THE DEGREE PROGRAM AND THE  
UNIVERSITY EXPERIENCE**

**MASTER OF SCIENCE IN  
CYBER RISK STRATEGY AND  
GOVERNANCE  
a.y. 2021-2022**

**SURVEY PERIOD: JULY 2022 - JULY 2023**

**N° QUESTIONNAIRES PROCESSED: 36**

**N° OF GRADUATE STUDENTS: 38**

**RESPONSE RATE: 94,7%**



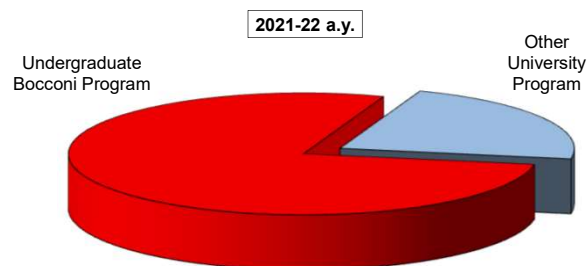
## EVALUATION OF UNIVERSITY EXPERIENCE

### Cyber Risk Strategy and Governance

#### General information

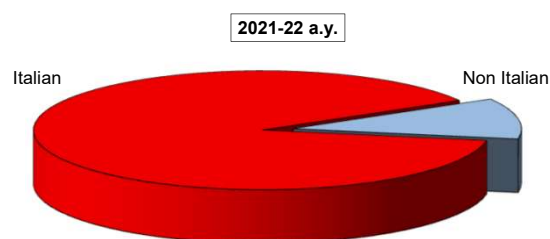
##### Undergraduate Career

Answers	a.v.	% 2021-22	% 2020-21
Undergraduate Bocconi Program	28	77,8	69,0
Other University Program	8	22,2	31,0
<b>Total</b>	<b>36</b>	<b>100,0</b>	<b>100,0</b>
NA	0		



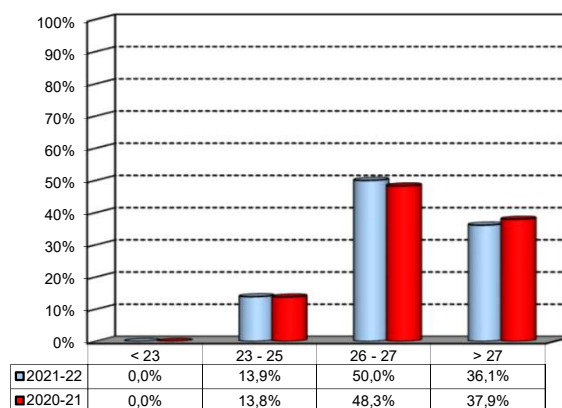
##### Nationality

Answers	a.v.	% 2021-22	% 2020-21
Italian	32	88,9%	89,7%
Non Italian	4	11,1%	10,3%
<b>Total</b>	<b>36</b>	<b>100%</b>	<b>100%</b>
NA	0		



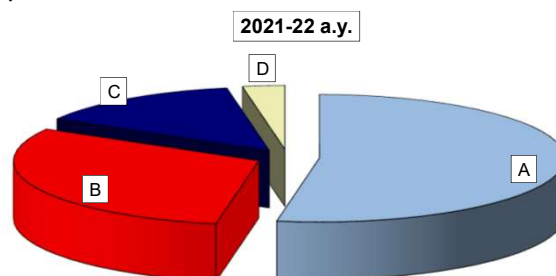
##### Average mark of the exams passed: (approximate average expressed in 30/30)

Answers	a.v.	%
meno di 23	0	0,0%
23-25	5	13,9%
26-27	18	50,0%
maggiore di 27	13	36,1%
<b>Total</b>	<b>36</b>	<b>100%</b>
NA	0	



##### How many of the courses included in your curriculum did you attend regularly?

Answers	a.v.	% 2021-22	% 2020-21
A - More than 75%	19	52,8	75,9
B - Between 50 and 75%	11	30,6	10,3
C - Between 25 and 50%	5	13,9	10,3
D - Less than 25%	1	2,8	3,4
<b>Total</b>	<b>36</b>	<b>100,0</b>	<b>100,0</b>
NA	0		

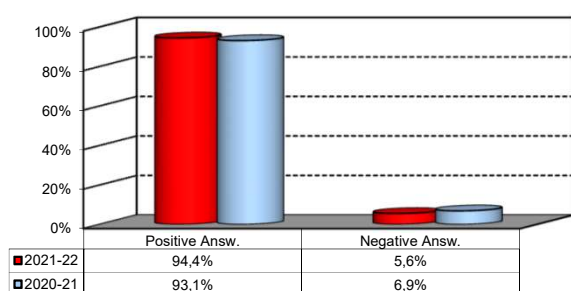


## Study Experience

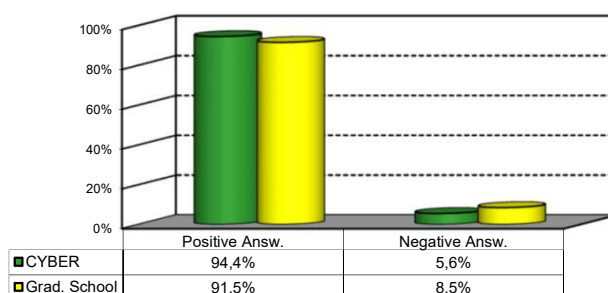
1) On the whole, do you think that the MSc program you attended at Bocconi enabled in-depth study of topics in both a theoretical and a practical sense?

Answers	Italian		Non Italian		Total	
	a.v.	%	a.v.	%	a.v.	%
A - Definitely YES	17	53,1%	0	0,0%	17	47,2%
B - More YES than NO	13	40,6%	4	100,0%	17	47,2%
C - More NO than YES	1	3,1%	0	0,0%	1	2,8%
D - Definitely NO	1	3,1%	0	0,0%	1	2,8%
<b>Total</b>	<b>32</b>	<b>100%</b>	<b>4</b>	<b>100%</b>	<b>36</b>	<b>100%</b>
NA	0		0			

Over time comparison



Comparison with the overall School data



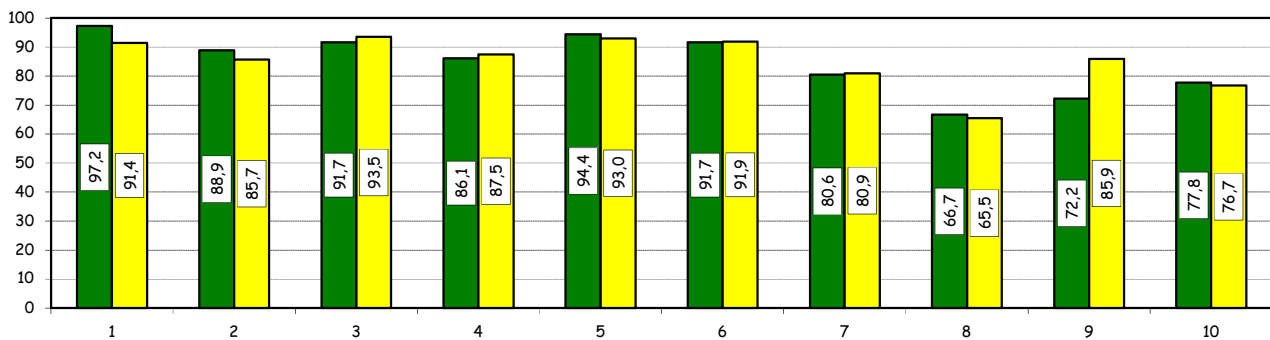
## Study Experience

2) Do you think that your course of study at Bocconi has contributed to the development of the following skills?

Soft Skill	Item	Definitely YES		More YES than NO		More NO than YES		Definitely NO		Total		n.a.
		a.v.	%	a.v.	%	a.v.	%	a.v.	%	a.v.	%	
1	Ability to work in team	21	58,3	14	38,9	0	0,0	1	2,8	36	100,0	0
2	Interpersonal skills	17	47,2	15	41,7	3	8,3	1	2,8	36	100,0	0
3	Organizational skills	13	36,1	20	55,6	2	5,6	1	2,8	36	100,0	0
4	Critical thinking skills	16	44,4	15	41,7	4	11,1	1	2,8	36	100,0	0
5	Ability to analyze and select information	13	36,1	21	58,3	1	2,8	1	2,8	36	100,0	0
6	Problem-solving ability	15	41,7	18	50,0	2	5,6	1	2,8	36	100,0	0
7	Written communication skills	11	30,6	18	50,0	6	16,7	1	2,8	36	100,0	0
8	Verbal communication skills	9	25,0	15	41,7	11	30,6	1	2,8	36	100,0	0
9	Ability to cope with stress	14	38,9	12	33,3	9	25,0	1	2,8	36	100,0	0
10	Entrepreneurial spirit	10	27,8	18	50,0	7	19,4	1	2,8	36	100,0	0

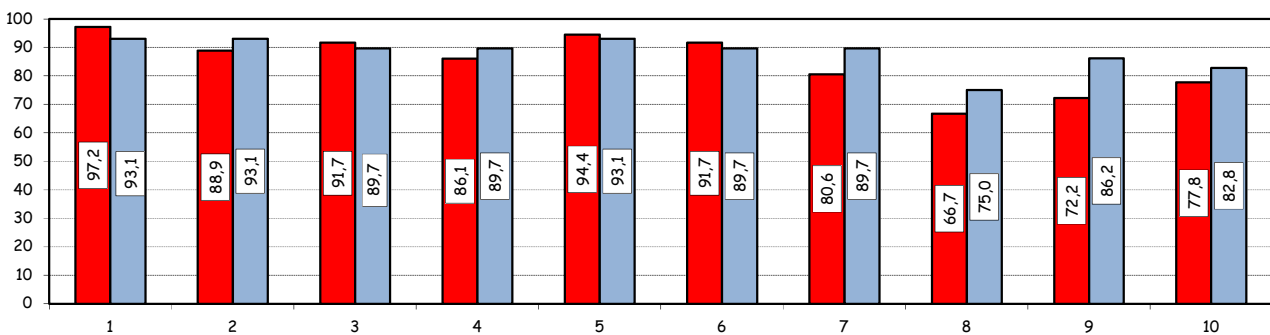
Positive answers (%):  
comparison with the overall School data

■ CYBER ■ Grad. School



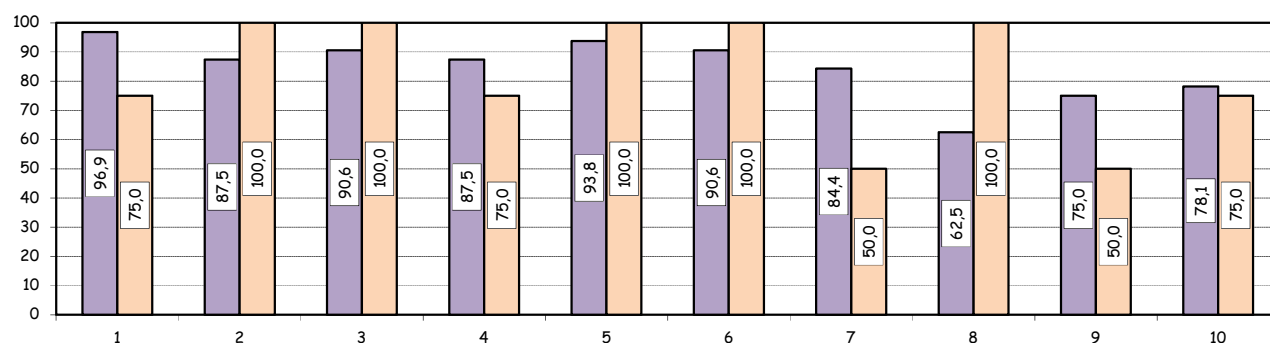
Positive answers (%):  
Over time comparison

■ 2021-22 ■ 2020-21



Positive answers (%):  
comparison based on nationality of student

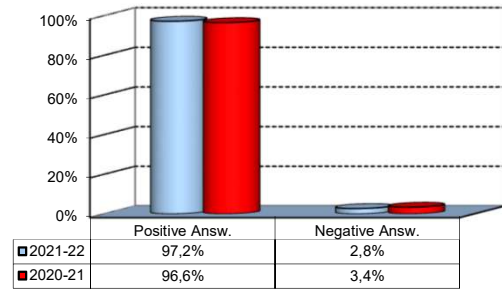
■ Italian ■ Non Italian



## Study Experience

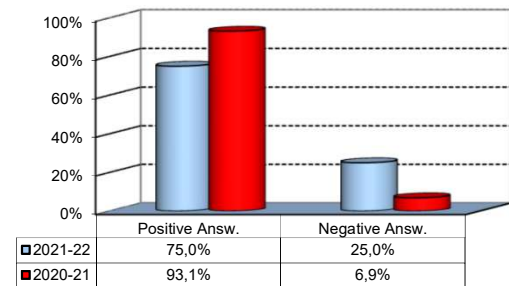
3) Do you think that teaching activities in the MSc program were structured in an active manner (frequent use of teamwork, case studies, assignments, etc.)?

Answers	a. v.	%
A - Definitely YES	19	52,8%
B - More YES than NO	16	44,4%
C - More NO than YES	0	0,0%
D - Definitely NO	1	2,8%
<b>Total</b>	<b>36</b>	<b>100%</b>
NA	0	



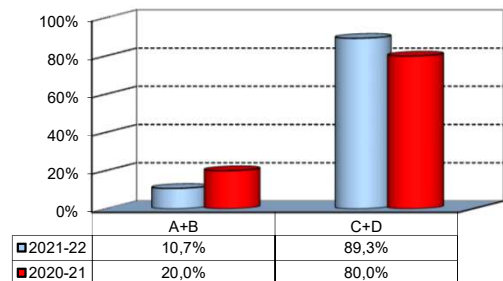
4) Do you think that the courses in your curriculum were adequately coordinated with each other?

Answers	a. v.	%
A - Definitely YES	6	16,7%
B - More YES than NO	21	58,3%
C - More NO than YES	8	22,2%
D - Definitely NO	1	2,8%
<b>Total</b>	<b>36</b>	<b>100%</b>
NA	0	



5) During the MSc program, did you notice any unnecessary overlaps or repetitions of subjects and content with what you studied during your undergraduate program?

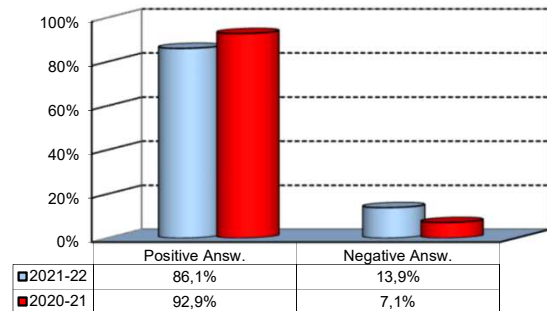
Answers	a. v.	%
A-Very often	2	7,1%
B-Often	1	3,6%
C-Hardly ever	16	57,1%
D-Never	9	32,1%
<b>Total</b>	<b>28</b>	<b>100%</b>
NA	8	



## Study Experience

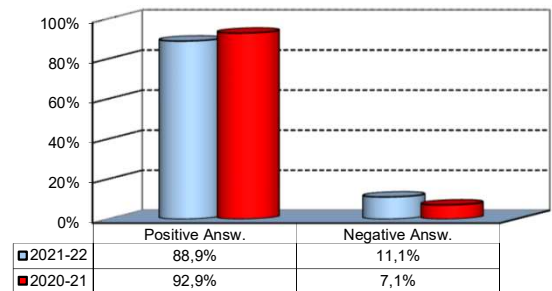
6) Do you think that the overall study load was compatible with the length of the program?

Answers	a.v.	%
A - Definitely YES	17	47,2%
B - More YES than NO	14	38,9%
C - More NO than YES	3	8,3%
D - Definitely NO	2	5,6%
<b>Total</b>	<b>36</b>	<b>100%</b>
NA	0	



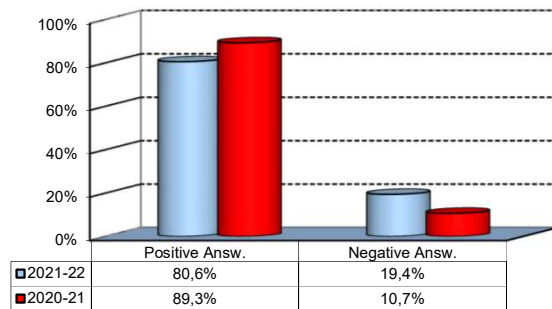
7) Was the coordination of the study program appropriately managed by the Program Director?

Answers	a.v.	%
A - Definitely YES	12	33,3%
B - More YES than NO	20	55,6%
C - More NO than YES	3	8,3%
D - Definitely NO	1	2,8%
<b>Total</b>	<b>36</b>	<b>100%</b>
NA	0	



8) On the whole, were the classroom climate and relationships with your classmates positive and able to enrich your personal experience?

Answers	a.v.	%
A - Definitely YES	20	55,6%
B - More YES than NO	9	25,0%
C - More NO than YES	4	11,1%
D - Definitely NO	3	8,3%
<b>Total</b>	<b>36</b>	<b>100%</b>
NA	0	

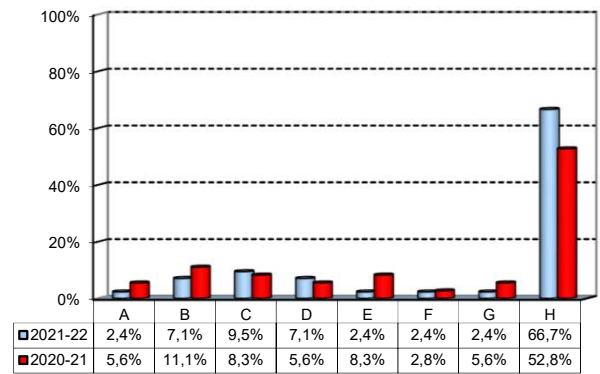


## Extracurricular Activities

1) Which of the following extracurricular activities did you attend during your study program?

(multiple answers admitted)

Answers	a.v.	%
A - Interdisciplinary courses ("Sapere a tutto campo")	1	2,4%
B - Counseling and Self-Empowerment courses CSE	3	7,1%
C - Cultural Activities (visit museums, concerts, theatre and cinema, various issues)	4	9,5%
D - Sport activities	3	7,1%
E - Wellbeing courses	1	2,4%
F - Courses offered by ITEC	1	2,4%
G - Courses offered by Language Center	1	2,4%
H - None	28	66,7%
<b>Total</b>	<b>42</b>	<b>100%</b>
NA	0	

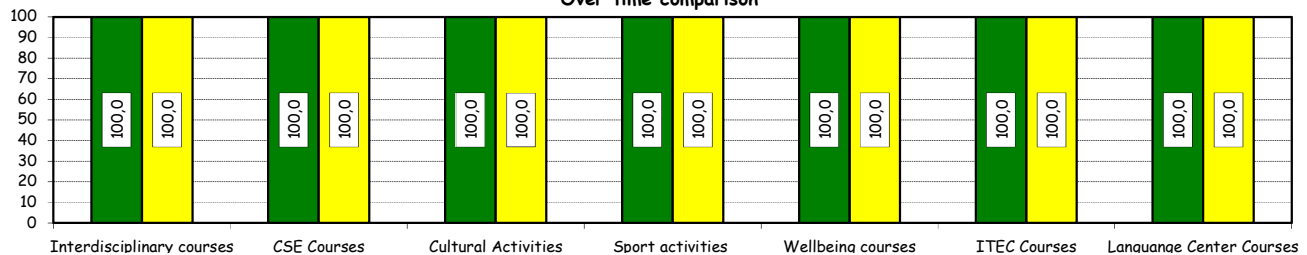


2) Do you think that the activities you took part in contributed to your cultural/educational enrichment?

	Definitely YES		More YES than NO		More NO than YES		Definitely NO		Total		NA
	a.v.	%	a.v.	%	a.v.	%	a.v.	%	a.v.	%	
A - Interdisciplinary courses	0	0,0	1	100,0	0	0,0	0	0,0	1	100,0	0
B - CSE courses	1	33,3	2	66,7	0	0,0	0	0,0	3	100,0	0
C - Cultural Activities	3	75,0	1	25,0	0	0,0	0	0,0	4	100,0	0
D - Sport activities	2	66,7	1	33,3	0	0,0	0	0,0	3	100,0	0
E - Wellbeing courses	0	0,0	1	100,0	0	0,0	0	0,0	1	100,0	0
F - ITEC courses	1	100,0	0	0,0	0	0,0	0	0,0	1	100,0	0
G - Language Center courses	1	100,0	0	0,0	0	0,0	0	0,0	1	100,0	0

Positive answers (%):

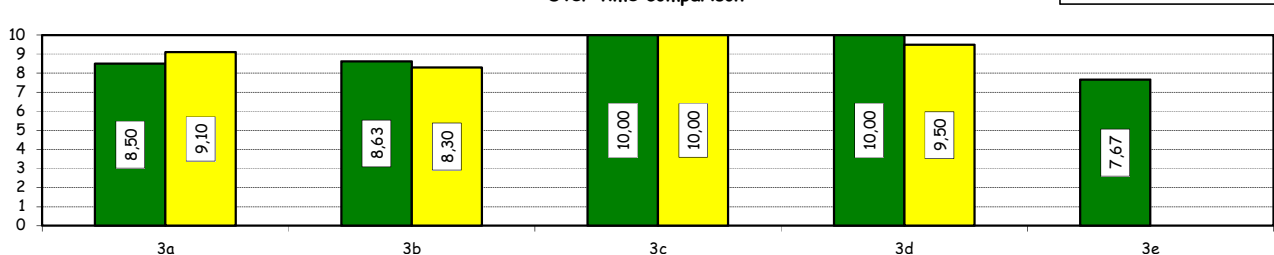
Over time comparison



How would you evaluate:

Item	Negative		3-4-5		6-7-8		Positive		Total		NA
	1-2						9-10				
Answers	a.v.	%	a.v.	%	a.v.	%	a.v.	%	a.v.	%	
3a) The range and interest of programmes offered	0	0,0	1	12,5	3	37,5	4	50,0	8	100,0	0
3b) The support you received from the Campus Life Office	0	0,0	1	12,5	3	37,5	4	50,0	8	100,0	0
3c) The support you received from ITEC	0	0,0	0	0,0	0	0,0	1	100,0	1	100,0	0
3d) The support you received from Language Center	0	0,0	0	0,0	0	0,0	1	100,0	1	100,0	0
3e) The support you received from Bocconi Sport Team	0	0,0	1	33,3	1	33,3	1	33,3	3	100,0	0

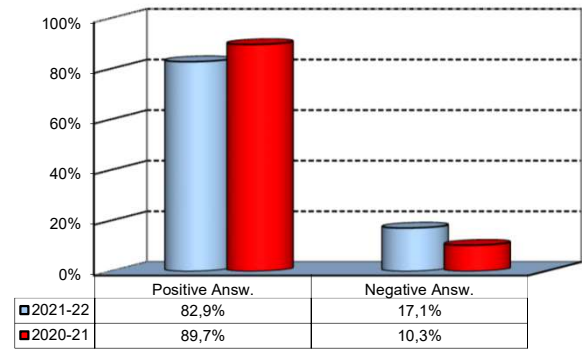
Over time comparison



## Degree Thesis

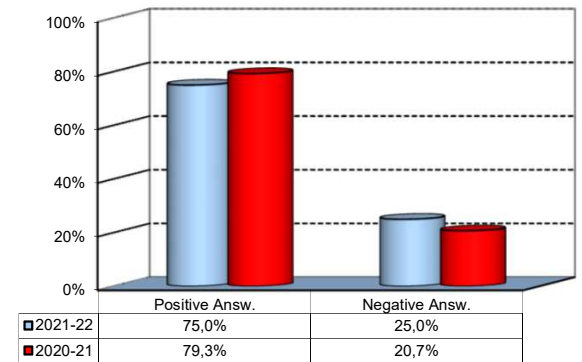
1) Do you think that the supervision and the assistance for preparing for your thesis were appropriate?

Answers	a. v.	%
A - Definitely YES	19	54,3%
B - More YES than NO	10	28,6%
C - More NO than YES	4	11,4%
D - Definitely NO	2	5,7%
<b>Total</b>	<b>35</b>	<b>100%</b>
NA	1	



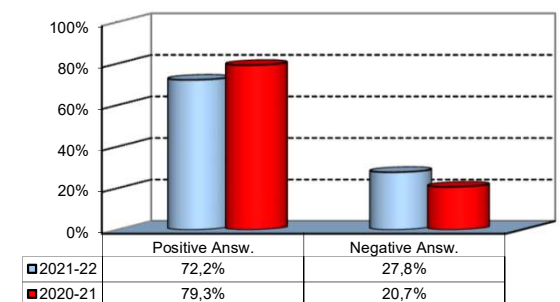
2) Do you think that the facilities provided by the University (library, computer labs) adequately supported preparation for your thesis?

Answers	a. v.	%
A - Definitely YES	11	30,6%
B - More YES than NO	16	44,4%
C - More NO than YES	9	25,0%
D - Definitely NO	0	0,0%
<b>Total</b>	<b>36</b>	<b>100%</b>
NA	0	



3) Do you think that your thesis was a useful experience for completing your education and a way to verify your planning and writing skills?

Answers	a. v.	%
A - Definitely YES	9	25,0%
B - More YES than NO	17	47,2%
C - More NO than YES	8	22,2%
D - Definitely NO	2	5,6%
<b>Total</b>	<b>36</b>	<b>100%</b>
NA	0	





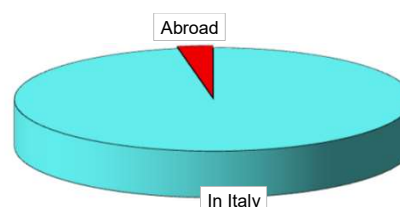
## Internship Activities

1) Which activity recognized in your curriculum did you complete during the MSc program?

Answers	a.v.	%	%
		2021-22	2020-21
A - Internship/Other job experience	35	97,2	89,7
B - Alternative Activity^	1	2,8	10,3
<b>Total</b>	<b>36</b>	<b>100,0</b>	<b>100,0</b>
NA	0		

2) Where did you complete the internship recognized by the Bachelor program?

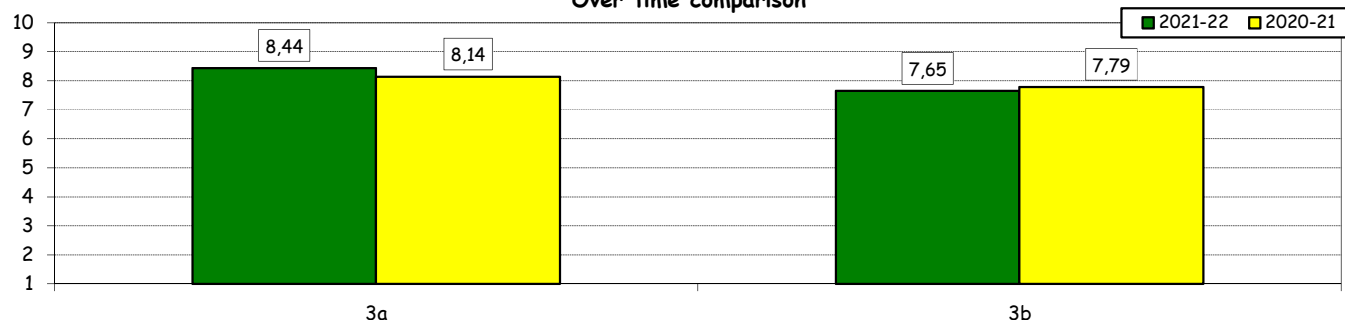
Answers	a.v.	%	%
		2021-22	2020-21
In Italy	34	97,1%	100,0%
Abroad	1	2,9%	0,0%
<b>Total</b>	<b>35</b>	<b>100%</b>	<b>100%</b>
NA	0		



How would you evaluate:

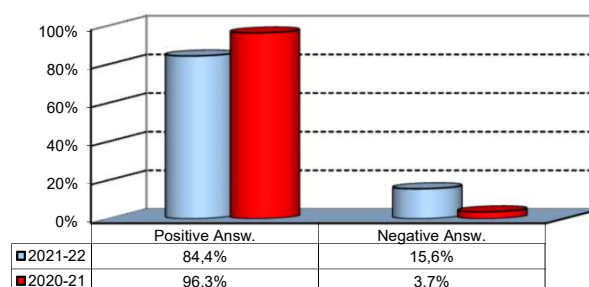
Item	Answers	Negative				Positive				Total		N.A.
		1-2		3-4-5		6-7-8		9-10		a.v.	%	a.v.
		a.v.	%	a.v.	%	a.v.	%	a.v.	%			
3a) The number and variety of opportunities offered.		1	3,1	4	12,5	5	15,6	22	68,8	32	100,0	3
3b) The support you received from the Internship Office.		1	3,2	7	22,6	9	29,0	14	45,2	31	100,0	4

Over time comparison



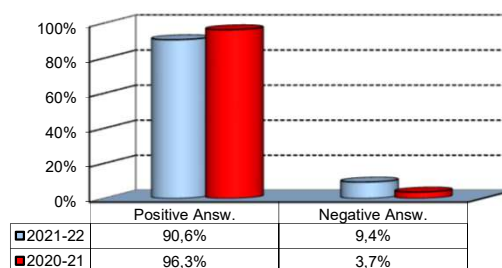
4) Would you positively evaluate this experience?

Answers	a.v.	%
A - Definitely YES	17	53,1%
B - More YES than NO	10	31,3%
C - More NO than YES	3	9,4%
D - Definitely NO	2	6,3%
<b>Total</b>	<b>32</b>	<b>100%</b>
NA	3	



5) Do you think that the qualifications you acquired while attending the MSc program were appropriate to perform this activity?

Answers	a.v.	%
A - Definitely YES	15	46,9%
B - More YES than NO	14	43,8%
C - More NO than YES	3	9,4%
D - Definitely NO	0	0,0%
<b>Total</b>	<b>32</b>	<b>100%</b>
NA	3	



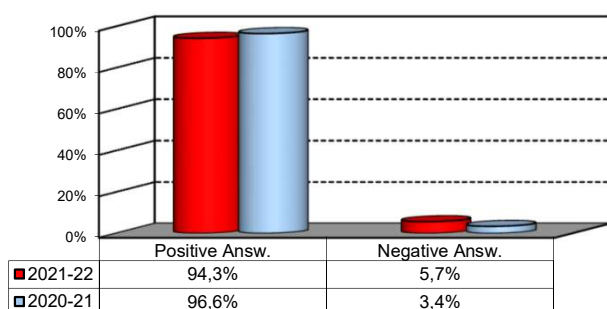
^: During the pandemic, students were given the opportunity to replace the mandatory internship with an alternative activity called Career Start Pack. It consists in an elective exam integrated with mandatory participation in the virtual career orientation path

## General satisfaction and short-term plans

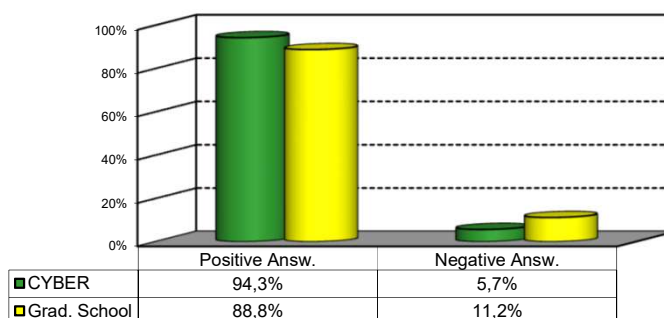
1) Are you satisfied overall with the study program you attended?

Answers	Italian		Non Italian		Total	
	a.v.	%	a.v.	%	a.v.	%
A - Definitely YES	15	48,4%	0	0,0%	15	42,9%
B - More YES than NO	14	45,2%	4	100,0%	18	51,4%
C - More NO than YES	2	6,5%	0	0,0%	2	5,7%
D - Definitely NO	0	0,0%	0	0,0%	0	0,0%
<b>Total</b>	<b>31</b>	<b>100%</b>	<b>4</b>	<b>100%</b>	<b>35</b>	<b>100%</b>
NA	1		0		1	

Over time comparison



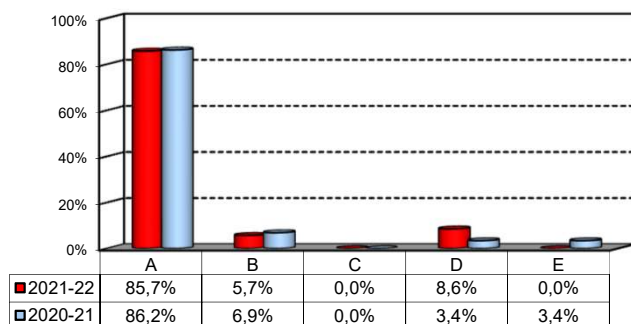
Comparison with the overall School data



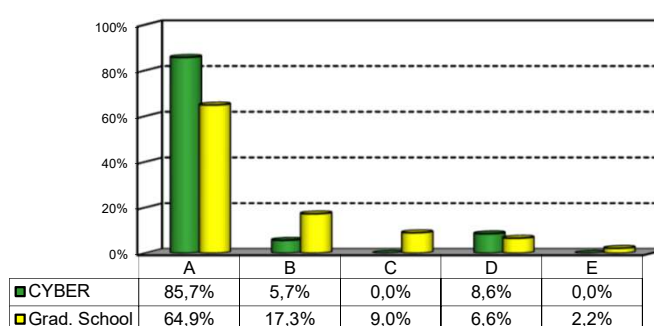
2a) If you could go back in time, would you enroll in the University again?

Answers	Italian		Non Italian		Total	
	v.a.	%	v.a.	%	v.a.	%
A-YES, in the same program at this University	26	83,9%	4	100,0%	30	85,7%
B-YES, in another program at this University	2	6,5%	0	0,0%	2	5,7%
C-YES, in the same program but at another University	0	0,0%	0	0,0%	0	0,0%
D-YES, in another program at another University	3	9,7%	0	0,0%	3	8,6%
E-NO, I would not enrol in university anymore	0	0,0%	0	0,0%	0	0,0%
<b>Total</b>	<b>31</b>	<b>100%</b>	<b>4</b>	<b>100%</b>	<b>35</b>	<b>100%</b>
NA	1		0		1	

Over time comparison



Comparison with the overall School data



## General satisfaction and short-term plans

(In case of answer "B" to item no.2a)

2b) Which program would you enroll at this University?

<b>MSc</b>	<b>a.v.</b>	<b>%</b>
ACME	0	0,0%
AFC	0	0,0%
FIN	0	0,0%
CLELI	0	0,0%
ESS	0	0,0%
EMIT	1	50,0%
GIO	0	0,0%
IM	1	50,0%
M	0	0,0%
MM	0	0,0%
CYBER	0	0,0%
<b>Total</b>	<b>2</b>	<b>100%</b>
NA	0	

2c) Why would you make a different choice?

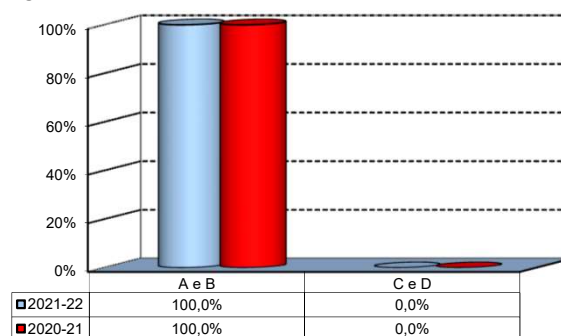
(In case of answer "B", "C", "D" or "E" to item no.2a)

<b>Answers</b>	<b>a.v.</b>	<b>% 2021-22</b>	<b>% 2020-21</b>
A - My interest has changed over time / I discovered that I have different attitudes	2	40,0%	50,0%
B -The MS program did not satisfy my expectations	2	40,0%	25,0%
C I would have preferred to attend the same MS program but taught in English	0	0,0%	0,0%
D - Other reasons	1	20,0%	25,0%
<b>Total</b>	<b>5</b>	<b>100%</b>	<b>100%</b>
NA	0		

## Infrastructure: Classrooms, Library And Facilities

1) What is your opinion about the classrooms where lessons and other teaching activities have been held?\*

Answers	a.v.	%
A - Always or nearly always adequate	17	48,6%
B - Often adequate	17	48,6%
C - Rarely adequate	0	0,0%
D - Never adequate	0	0,0%
E - I did not use them	1	2,9%
<b>Total</b>	<b>35</b>	<b>100%</b>
NA	1	

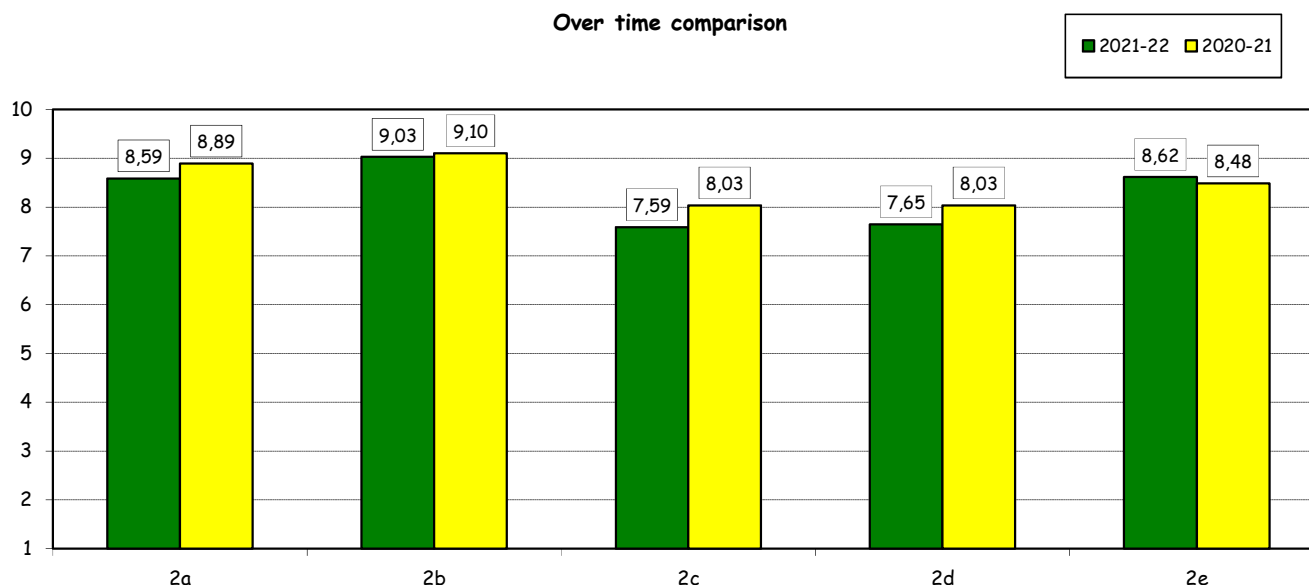


2) How would you evaluate:

(In case of answer "A", "B", "C" or "D" to item no.1)

Answers		Negative				Positive				Total		NA	N.R.
		1-2		3-4-5		6-7-8		9-10					
		a.v.	%	a.v.	%	a.v.	%	a.v.	%	a.v.	%		
a) The adequacy of the audio and multimedia systems (e.g. instructor's computer, projectors, video players) installed in the classrooms.	0	0,0	2	5,9	13	38,2	19	55,9	34	100,0		2	
b) The cleanliness of classrooms and of other common areas on campus (corridors, halls, study rooms).	0	0,0	1	2,9	9	26,5	24	70,6	34	100,0		2	
c) The adequacy of the amount of areas/seats reserved to individual study in the University Library.	1	2,9	2	5,9	19	55,9	12	35,3	34	100,0	2	2	
d) The adequacy of the amount of areas/seats reserved to individual study in other buildings on campus.	0	0,0	4	11,8	19	55,9	11	32,4	34	100,0	0	2	
e) The clarity and adequacy of the signage system on campus.	0	0,0	2	5,9	11	32,4	21	61,8	34	100,0		2	

Over time comparison

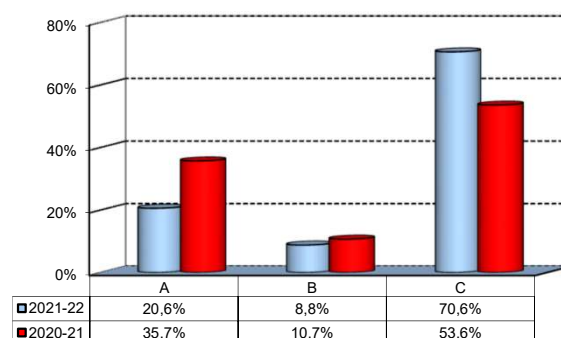


(\*): the percentage shown on the graphs is calculated by excluding the responses of those who declare that they have not used the service.

## Infrastructure: Classrooms, Library And Facilities

3) What is your overall opinion on the PC Labs and IT facilities provided by the University?

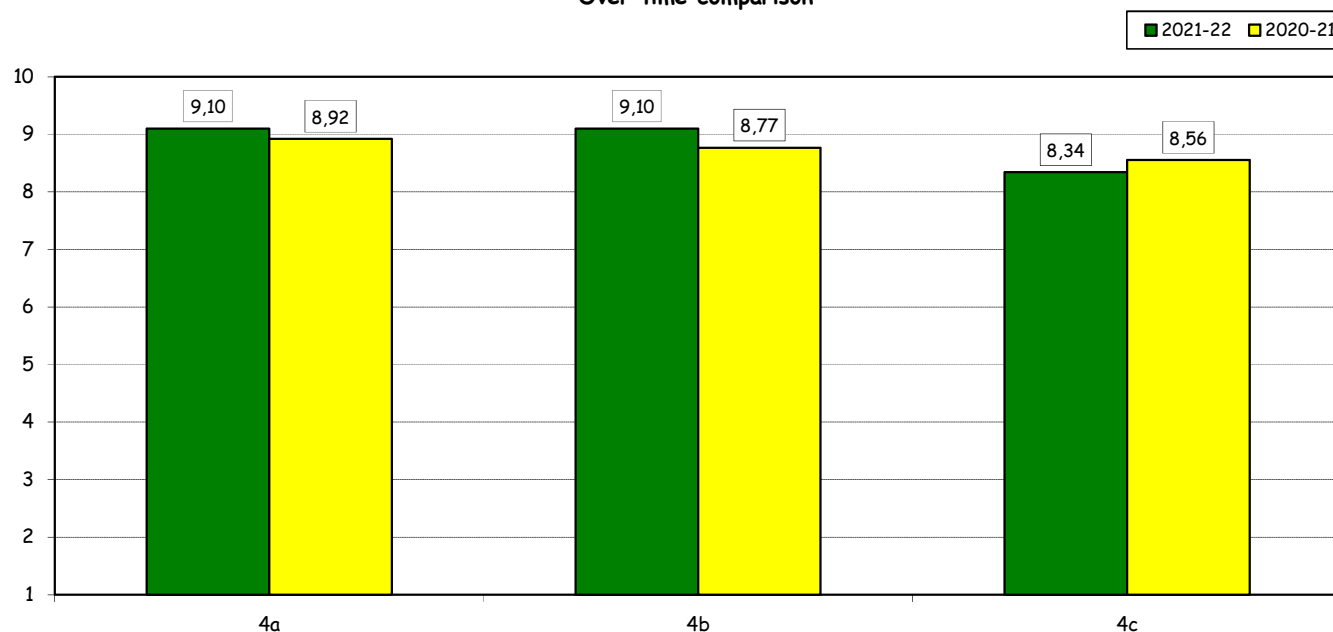
Answers	a.v.	%
A- Adequate in number	7	20,6%
B- Inadequate in number	3	8,8%
C- Never used	24	70,6%
<b>Total</b>	<b>34</b>	<b>100%</b>
NA	2	



4) How do you evaluate:

		Negative						Positive				
<div>Answers</div> <div>Item</div>		1-2		3-4-5		6-7-8		9-10		Total		N.R.
		a.v.	%	a.v.	%	a.v.	%	a.v.	%	a.v.	%	
a) The availability of technical staff supporting students (Tutors) in PC Labs.*		0	0,0	0	0,0	2	20,0	8	80,0	10	100,0	0
b)The convenience of the PC Labs' opening hours.*		0	0,0	0	0,0	2	20,0	8	80,0	10	100,0	0
c) The level of accessibility and usability of the University's IT services (Internet access points, Punto Blu, Virtual Punto Blu, wireless connection).		0	0,0	2	5,7	13	37,1	20	57,1	35	100,0	-1

Over time comparison

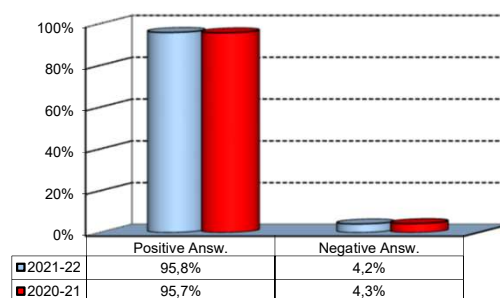


(\*): Only in case of answer "A" or "B" to item no.3

## Infrastructure: Classrooms, Library And Facilities

5) What is your overall opinion on the Library's services, such as support for individual study?\*

Answers	a.v.	%
A - Very Positive	13	37,1%
B - Quite positive	10	28,6%
C - Quite negative	1	2,9%
D - Very Negative	0	0,0%
E - Never used	11	31,4%
<b>Total</b>	<b>35</b>	<b>100%</b>
NA	1	

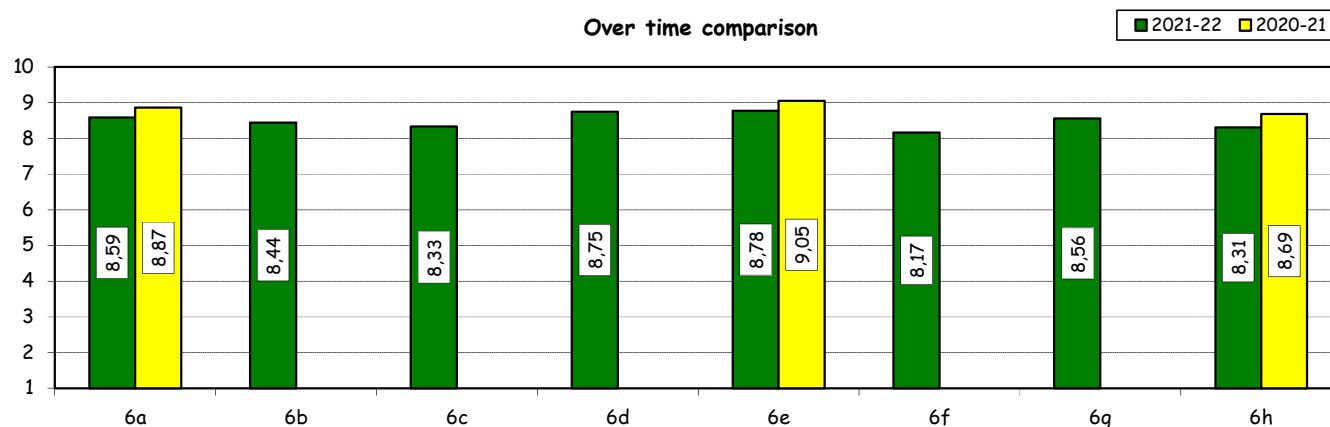


6) How would you evaluate:

(In case of answer "A", "B", "C" or "D" to item no. 5)

<div>Answers</div> <div>Item</div>		Negative				Positive				Total		N.A.
		1-2		3-4-5		6-7-8		9-10				
		a.v.	%	a.v.	%	a.v.	%	a.v.	%	a.v.	%	a.v.
a) The convenience of the Library's opening hours and access to its main services.		0	0,0	0	0,0	9	52,9	8	47,1	17	100,0	7
b) Range of subjects covered in hardcopy collections (books and journals) compared to your needs of study and research		0	0,0	0	0,0	9	50,0	9	50,0	18	100,0	6
c) The relevance and updating of online collections (e-books, e-journals, databases) compared to your needs of study and research		0	0,0	0	0,0	12	66,7	6	33,3	18	100,0	6
d) The ease of use of search tools available on the Library website		0	0,0	0	0,0	8	50,0	8	50,0	16	100,0	8
e) The assistance provided by the Library staff		0	0,0	0	0,0	7	38,9	11	61,1	18	100,0	6
f) Availability of documents (textbooks, articles, chapters, case studies, etc.) used in individual courses		0	0,0	1	5,6	9	50,0	8	44,4	18	100,0	6
g) The Library website as a source of information on the services offered and as a point of access for resources		0	0,0	1	5,6	6	33,3	11	61,1	18	100,0	6
h) The usefulness of workshops offered by the Library to understand how to use the resources available (catalogues, e-journals, databases, etc.)		0	0,0	0	0,0	11	68,8	5	31,3	16	100,0	8

Over time comparison



(\*): the percentage shown on the graphs is calculated by excluding the responses of those who declare that they have not used the service.