

**EVALUATION OF
THE DEGREE PROGRAM AND THE
UNIVERSITY EXPERIENCE**

**MASTER OF SCIENCE IN
INTERNATIONAL MANAGEMENT
a.y. 2021-2022**

SURVEY PERIOD: JULY 2022 - JULY 2023

N° QUESTIONNAIRES PROCESSED: 185

N° OF GRADUATE STUDENTS: 197

RESPONSE RATE: 93,9%



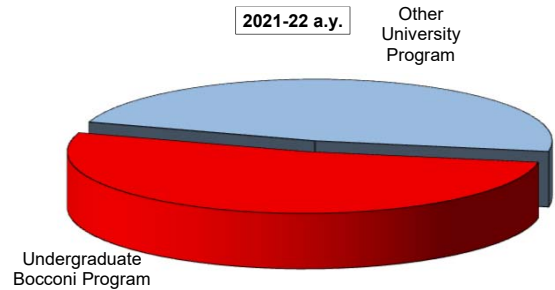
EVALUATION OF UNIVERSITY EXPERIENCE

International Management

General information

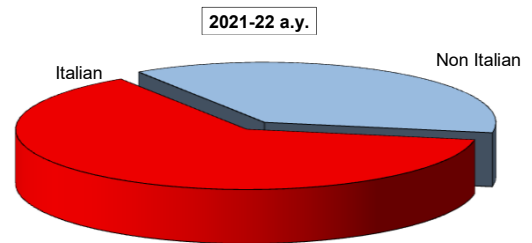
Undergraduate Career

Answers	a.v.	% 2021-22	% 2020-21
Undergraduate Bocconi Program	72	52,2	56,6
Other University Program	66	47,8	43,4
Total	138	100,0	100,0
NA	0		



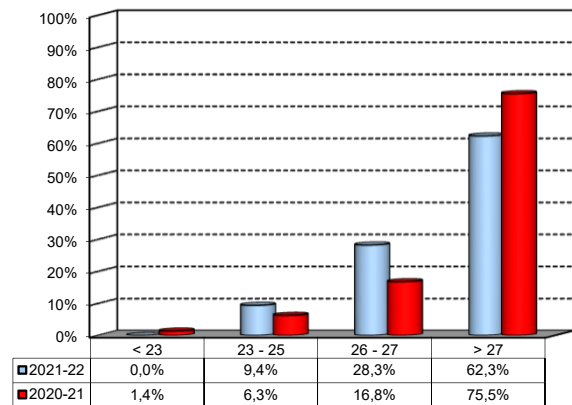
Nationality

Answers	a.v.	% 2021-22	% 2020-21
Italian	87	63,0%	62,2%
Non Italian	51	37,0%	37,8%
Total	138	100%	100%
NA	0		



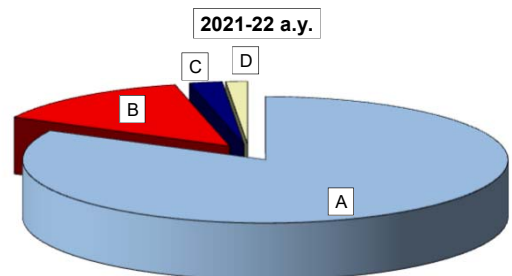
Average mark of the exams passed: (approximate average expressed in 30/30)

Answers	a.v.	%
meno di 23	0	0,0%
23-25	13	9,4%
26-27	39	28,3%
maggiore di 27	86	62,3%
Total	138	100%
NA	0	



How many of the courses included in your curriculum did you attend regularly?

Answers	a.v.	% 2021-22	% 2020-21
A - More than 75%	114	82,6	90,9
B - Between 50 and 75%	19	13,8	7,0
C - Between 25 and 50%	3	2,2	1,4
D - Less than 25%	2	1,4	0,7
Total	138	100,0	100,0
NA	0		

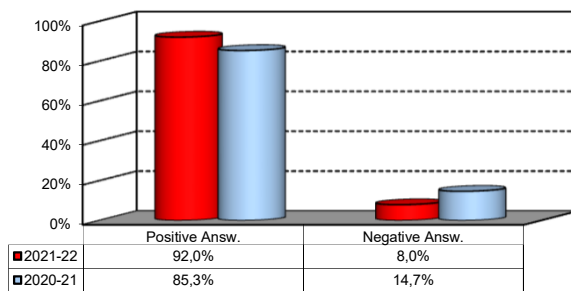


Study Experience

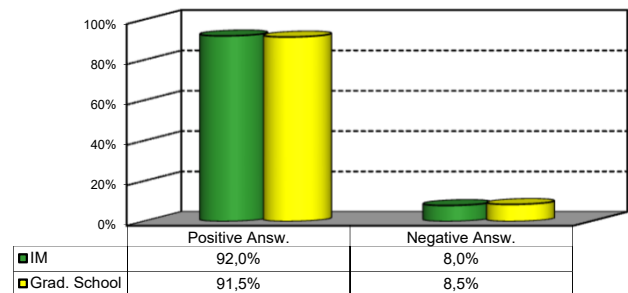
1) On the whole, do you think that the MSc program you attended at Bocconi enabled in-depth study of topics in both a theoretical and a practical sense?

Answers	Italian		Non Italian		Total	
	a.v.	%	a.v.	%	a.v.	%
A - Definitely YES	35	40,2%	19	37,3%	54	39,1%
B - More YES than NO	45	51,7%	28	54,9%	73	52,9%
C - More NO than YES	7	8,0%	2	3,9%	9	6,5%
D - Definitely NO	0	0,0%	2	3,9%	2	1,4%
Total	87	100%	51	100%	138	100%
NA	0		0			

Over time comparison



Comparison with the overall School data



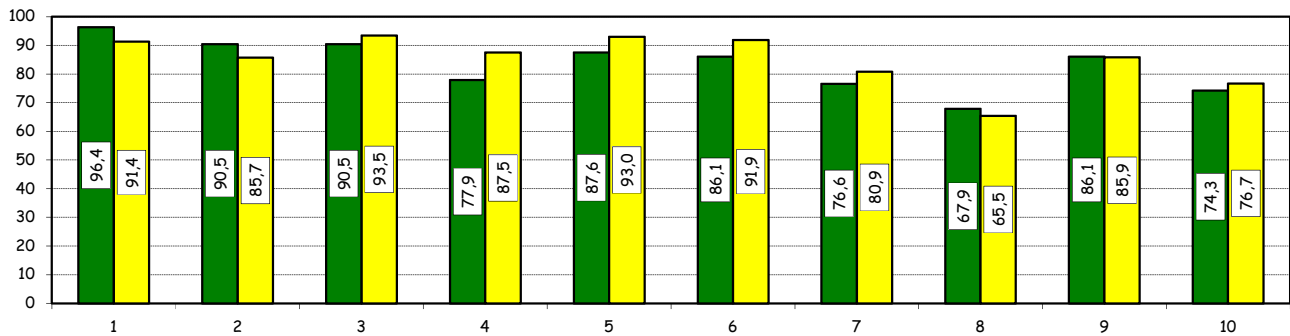
Study Experience

2) Do you think that your course of study at Bocconi has contributed to the development of the following skills?

Soft Skill	Item	Definitely YES		More YES than NO		More NO than YES		Definitely NO		Total		n.a.
		a.v.	%	a.v.	%	a.v.	%	a.v.	%	a.v.	%	a.v.
1	Ability to work in team	102	74,5	30	21,9	5	3,6	0	0,0	137	100,0	1
2	Interpersonal skills	75	54,7	49	35,8	12	8,8	1	0,7	137	100,0	1
3	Organizational skills	82	59,9	42	30,7	11	8,0	2	1,5	137	100,0	1
4	Critical thinking skills	56	41,2	50	36,8	23	16,9	7	5,1	136	100,0	2
5	Ability to analyze and select information	64	46,7	56	40,9	16	11,7	1	0,7	137	100,0	1
6	Problem-solving ability	65	47,4	53	38,7	17	12,4	2	1,5	137	100,0	1
7	Written communication skills	47	34,3	58	42,3	28	20,4	4	2,9	137	100,0	1
8	Verbal communication skills	44	32,1	49	35,8	34	24,8	10	7,3	137	100,0	1
9	Ability to cope with stress	78	56,9	40	29,2	15	10,9	4	2,9	137	100,0	1
10	Entrepreneurial spirit	48	35,3	53	39,0	26	19,1	9	6,6	136	100,0	2

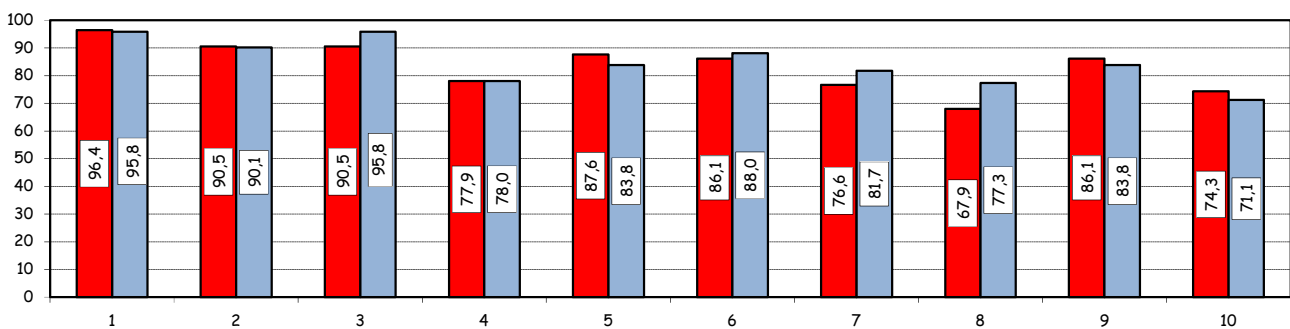
Positive answers (%):
comparison with the overall School data

■ IM ■ Grad. School



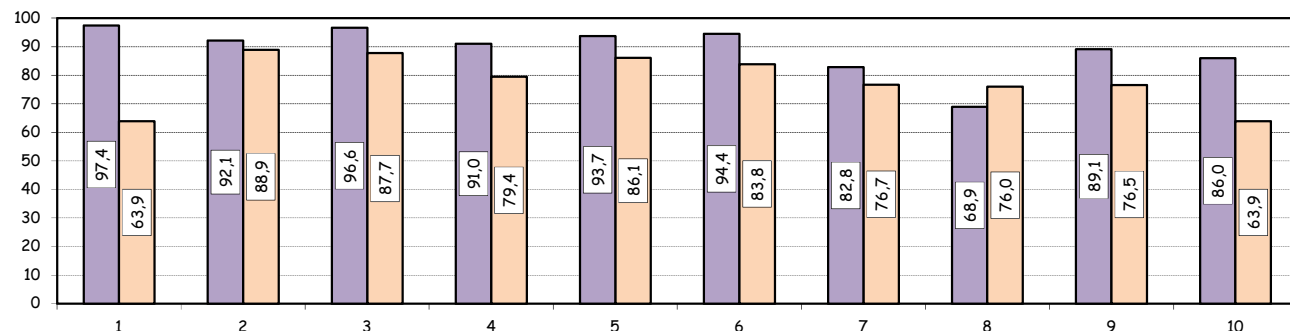
Positive answers (%):
Over time comparison

■ 2021-22 ■ 2020-21



Positive answers (%):
comparison based on nationality of student

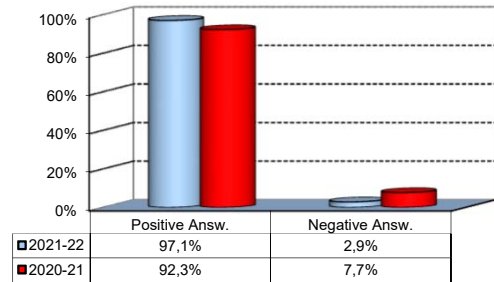
■ Italian ■ Non Italian



Study Experience

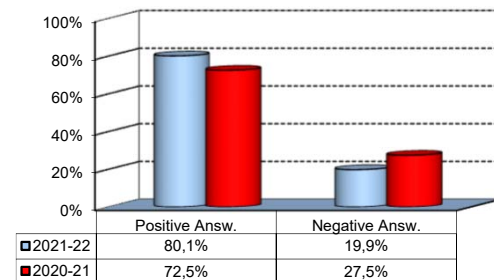
3) Do you think that teaching activities in the MSc program were structured in an active manner (frequent use of teamwork, case studies, assignments, etc.)?

Answers	a.v.	%
A - Definitely YES	73	53,7%
B - More YES than NO	59	43,4%
C - More NO than YES	4	2,9%
D - Definitely NO	0	0,0%
Total	136	100%
NA	2	



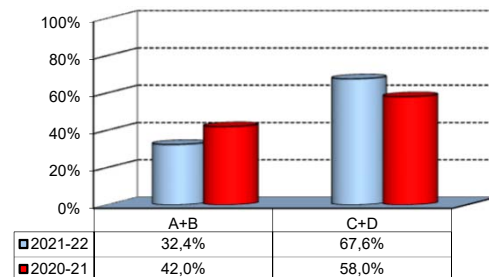
4) Do you think that the courses in your curriculum were adequately coordinated with each other?

Answers	a.v.	%
A - Definitely YES	34	25,0%
B - More YES than NO	75	55,1%
C - More NO than YES	25	18,4%
D - Definitely NO	2	1,5%
Total	136	100%
NA	2	



5) During the MSc program, did you notice any unnecessary overlaps or repetitions of subjects and content with what you studied during your undergraduate program?

Answers	a.v.	%
A-Very often	9	12,7%
B-Often	14	19,7%
C-Hardly ever	39	54,9%
D-Never	9	12,7%
Total	71	100%
NA	67	



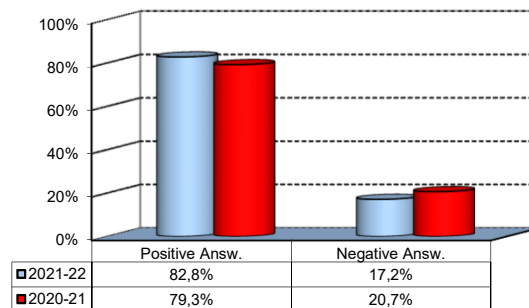
Please select the course or courses in the MSc program in which you encountered overlaps or unnecessary repetitions (multiple answers admitted)

Course	a.v.	%
ORGANIZZAZIONE D'IMPRESA - ORGANIZZAZIONE AZIENDALE	10	15,9%
ORGANIZZAZIONE D'IMPRESA - FONDAMENTI DI ORGANIZZAZIONE	9	14,3%
PERFORMANCE MEASUREMENT - PROGRAMMAZIONE E CONTROLLO	4	6,3%
CORPORATE STRATEGY - STRATEGIA E POLITICA AZIENDALE	3	4,8%
FONDAMENTI DI BUSINESS ANALYTICS - STATISTICA	3	4,8%
GLOBAL OPERATIONS AND SUPPLY CHAIN MANAGEMENT - GESTIONE DELLA TECNOLOGIA, DELL'INNOVAZIONE E DELLE OPERATIONS	3	4,8%
Other	31	49,2%
TOTAL	63	100,0%

Study Experience

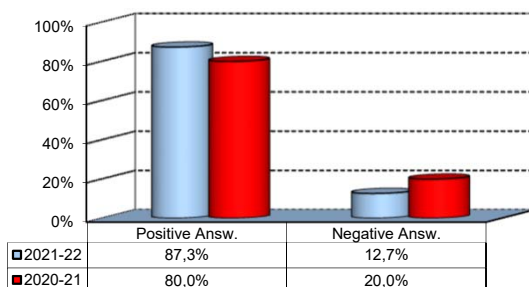
6) Do you think that the overall study load was compatible with the length of the program?

Answers	a.v.	%
A - Definitely YES	50	37,3%
B - More YES than NO	61	45,5%
C - More NO than YES	17	12,7%
D - Definitely NO	6	4,5%
Total	134	100%
NA	4	



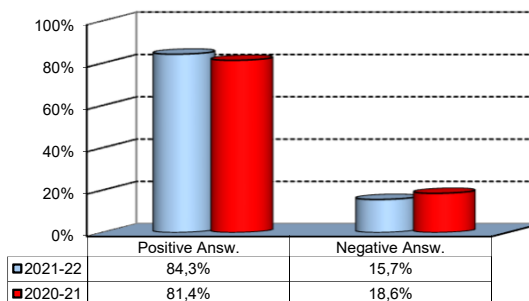
7) Was the coordination of the study program appropriately managed by the Program Director?

Answers	a.v.	%
A - Definitely YES	50	37,3%
B - More YES than NO	67	50,0%
C - More NO than YES	14	10,4%
D - Definitely NO	3	2,2%
Total	134	100%
NA	4	



8) On the whole, were the classroom climate and relationships with your classmates positive and able to enrich your personal experience?

Answers	a.v.	%
A - Definitely YES	56	41,8%
B - More YES than NO	57	42,5%
C - More NO than YES	19	14,2%
D - Definitely NO	2	1,5%
Total	134	100%
NA	4	

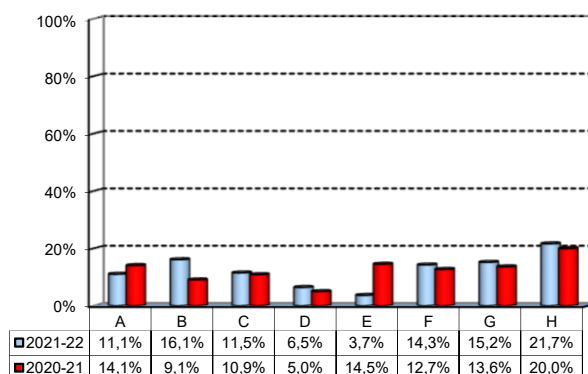


Extracurricular Activities

1) Which of the following extracurricular activities did you attend during your study program?

(multiple answers admitted)

Answers	a.v.	%
A - Interdisciplinary courses ("Sapere a tutto campo")	24	11,1%
B - Counseling and Self-Empowerment courses CSE	35	16,1%
C - Cultural Activities (visit museums, concerts, theatre and cinema, various issues)	25	11,5%
D - Sport activities	14	6,5%
E - Wellbeing courses	8	3,7%
F - Courses offered by ITEC	31	14,3%
G - Courses offered by Language Center	33	15,2%
H - None	47	21,7%
Total	217	100%
NA	0	

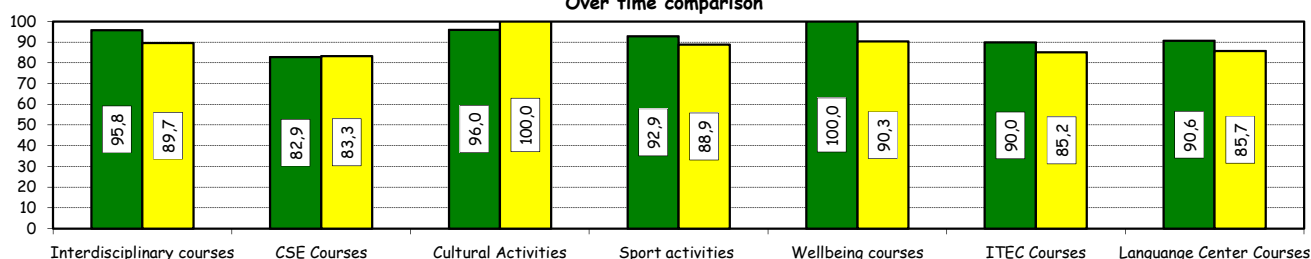


2) Do you think that the activities you took part in contributed to your cultural/educational enrichment?

	Definitely YES		More YES than NO		More NO than YES		Definitely NO		Total		NA
	a.v.	%	a.v.	%	a.v.	%	a.v.	%	a.v.	%	a.v.
A - Interdisciplinary courses	9	37,5	14	58,3	1	4,2	0	0,0	24	100,0	0
B - CSE courses	17	48,6	12	34,3	5	14,3	1	2,9	35	100,0	0
C - Cultural Activities	10	40,0	14	56,0	0	0,0	1	4,0	25	100,0	0
D - Sport activities	8	57,1	5	35,7	1	7,1	0	0,0	14	100,0	0
E - Wellbeing courses	5	62,5	3	37,5	0	0,0	0	0,0	8	100,0	0
F - ITEC courses	19	63,3	8	26,7	3	10,0	0	0,0	30	100,0	1
G - Language Center courses	14	43,8	15	46,9	2	6,3	1	3,1	32	100,0	1

Positive answers (%):
Over time comparison

■ 2021-22 ■ 2020-21

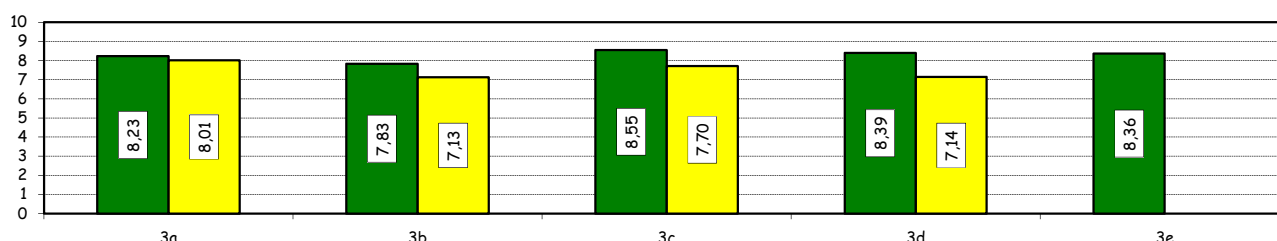


How would you evaluate:

Answers		Negative				Positive				Total		NA
		1-2		3-4-5		6-7-8		9-10				
Item		a.v.	%	a.v.	%	a.v.	%	a.v.	%	a.v.	%	
3a) The range and interest of programmes offered		0	0,0	5	5,8	40	46,5	41	47,7	86	100,0	5
3b) The support you received from the Campus Life Office		1	1,2	8	9,3	45	52,3	32	37,2	86	100,0	5
3c) The support you received from ITEC		0	0,0	3	9,7	10	32,3	18	58,1	31	100,0	0
3d) The support you received from Language Center		0	0,0	1	3,0	16	48,5	16	48,5	33	100,0	0
3e) The support you received from Bocconi Sport Team		0	0,0	2	14,3	4	28,6	8	57,1	14	100,0	0

Over time comparison

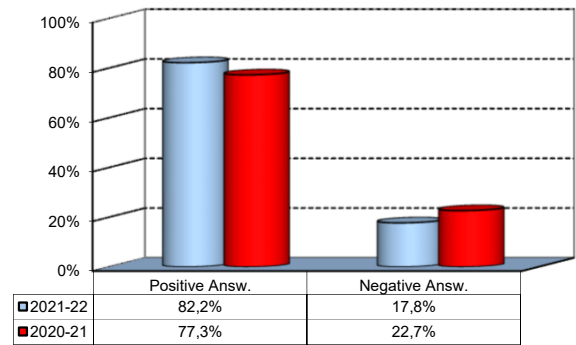
■ 2021-22 ■ 2020-21



Degree Thesis

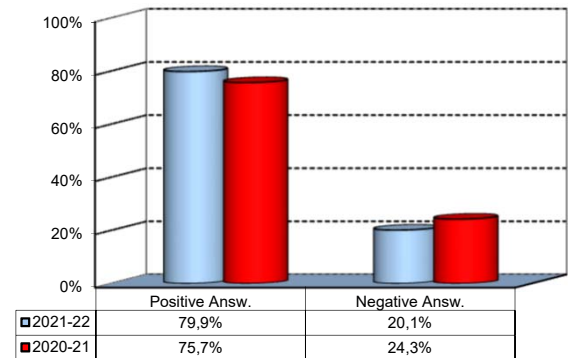
1) Do you think that the supervision and the assistance for preparing for your thesis were appropriate?

Answers	a.v.	%
A - Definitely YES	72	53,3%
B - More YES than NO	39	28,9%
C - More NO than YES	12	8,9%
D - Definitely NO	12	8,9%
Total	135	100%
NA	3	



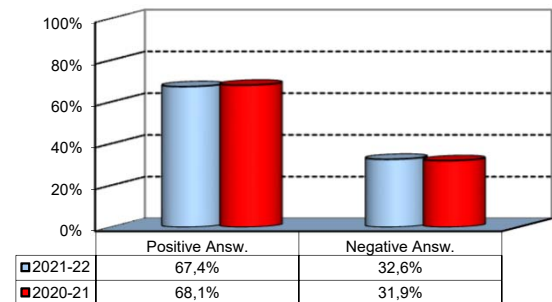
2) Do you think that the facilities provided by the University (library, computer labs) adequately supported preparation for your thesis?

Answers	a.v.	%
A - Definitely YES	40	29,9%
B - More YES than NO	67	50,0%
C - More NO than YES	19	14,2%
D - Definitely NO	8	6,0%
Total	134	100%
NA	4	



3) Do you think that your thesis was a useful experience for completing your education and a way to verify your planning and writing skills?

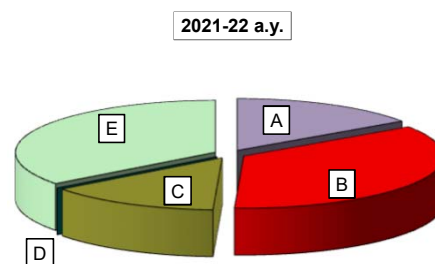
Answers	a.v.	%
A - Definitely YES	47	34,8%
B - More YES than NO	44	32,6%
C - More NO than YES	24	17,8%
D - Definitely NO	20	14,8%
Total	135	100%
NA	3	



Experience Of Studying Abroad

1) Please select the program you participated in:

Answers	% 2021-22 a.y.		
	a.v.	2021-22	2020-21
A - Exchange	21	15,4	5,7
B - CEMS-MIM	48	35,3	35,5
C- Double Degree	19	14,0	7,8
D - Free-Mover	0	0,0	0,0
E- None	48	35,3	51,1
Total	136	100,0	100,0
NA	2		

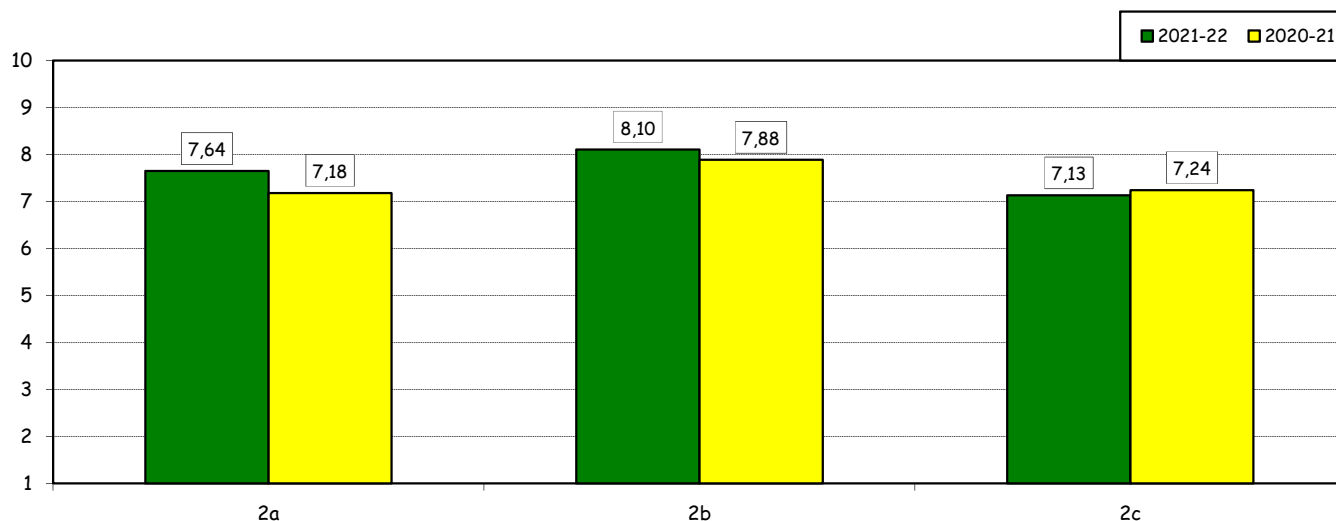


How would you evaluate:

(only A, B, C or E answers to item no.1)

Item	Answers	Negative				Positive				Total		N.A.
		1-2		3-4-5		6-7-8		9-10				a.v.
		a.v.	%	a.v.	%	a.v.	%	a.v.	%	a.v.	%	
2a) Quality and completeness of information provided through: 'International Week', emails, brochures, International Relations Service web page.		6	6,9	8	9,2	32	36,8	41	47,1	87	100,0	1
2b) The range and interest of programs offered.		3	3,4	7	8,0	33	37,9	44	50,6	87	100,0	1
2c) The support you received from Bocconi International Relations.		10	11,6	10	11,6	35	40,7	31	36,0	86	100,0	2

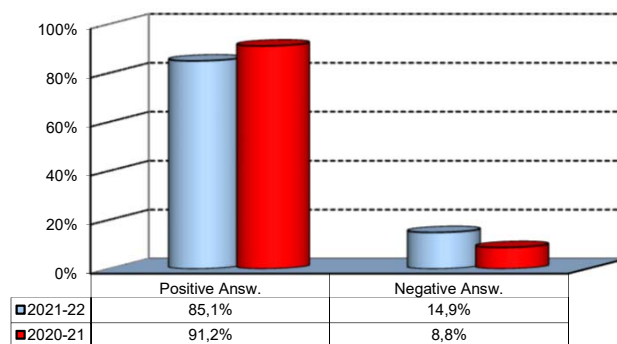
Over time comparison



Experience Of Studying Abroad

3) Would you positively evaluate this experience?

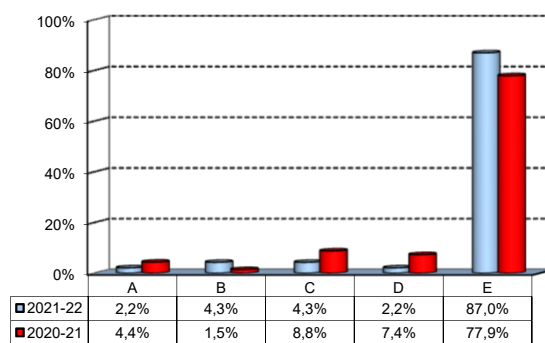
Answers	v.a.	%
A - Definitely YES	54	62,1%
B - More YES than NO	20	23,0%
C - More NO than YES	11	12,6%
D - Definitely NO	2	2,3%
Total	87	100%
NA	1	



(In case of answer "E" to item no.1)

4) Please indicate why you did not attend a period of study abroad (select all relevant reasons):

Answers	a.v.	%
A-Lack of interest in this kind of experience	1	2,2%
B-Absence of the requirements needed for participation in the program selected	2	4,3%
C-Rejection of your application	2	4,3%
D-Lack of time during the period of study	1	2,2%
E-Other (personal, family, organizational reasons, etc.)	40	87,0%
Total	46	100%
NA	2	



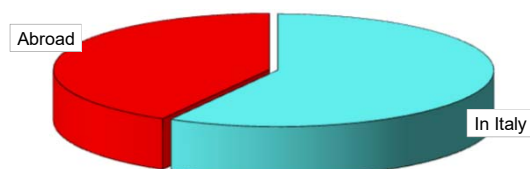
Internship Activities

1) Which activity recognized in your curriculum did you complete during the MSc program?

Answers	%	
	a.v.	%
A - Internship/Other job experience	134	97,1
B - Alternative Activity^	4	2,9
Total	138	100,0
NA	0	

2) Where did you complete the internship recognized by the Bachelor program?

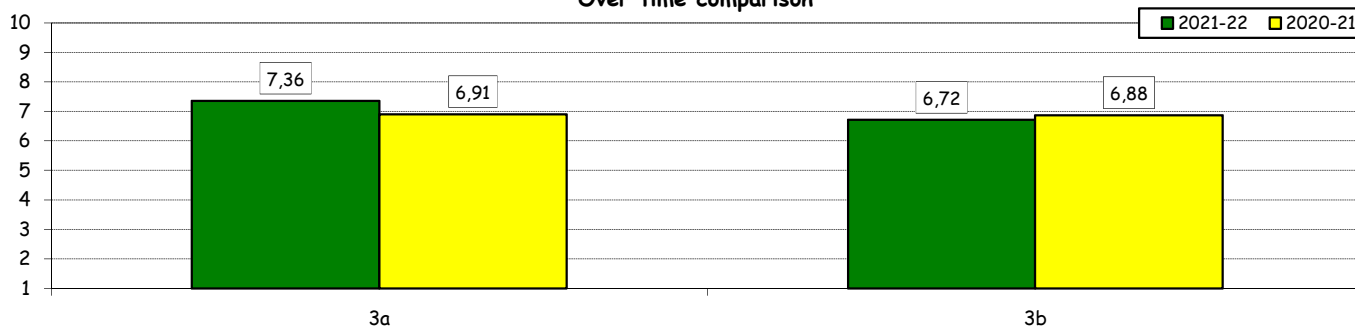
Answers	%	
	a.v.	%
In Italy	78	58,2%
Abroad	56	41,8%
Total	134	100%
NA	0	



How would you evaluate:

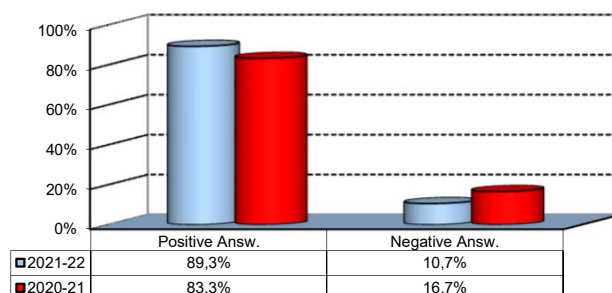
Item	Answers	Negative				Positive				Total		N.A.
		1-2		3-4-5		6-7-8		9-10				a.v.
		a.v.	%	a.v.	%	a.v.	%	a.v.	%	a.v.	%	
3a) The number and variety of opportunities offered.		3	2,5	17	13,9	65	53,3	37	30,3	122	100,0	12
3b) The support you received from the Internship Office.		7	5,8	29	24,2	55	45,8	29	24,2	120	100,0	14

Over time comparison



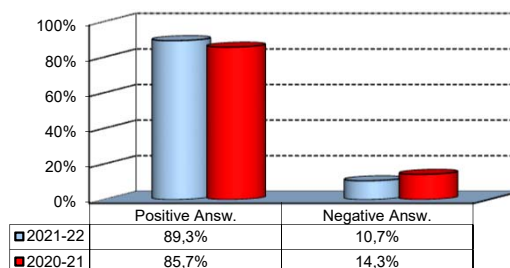
4) Would you positively evaluate this experience?

Answers	a.v.	%
A - Definitely YES	71	58,2%
B - More YES than NO	38	31,1%
C - More NO than YES	12	9,8%
D - Definitely NO	1	0,8%
Total	122	100%
NA	12	



5) Do you think that the qualifications you acquired while attending the MSc program were appropriate to perform this activity?

Answers	a.v.	%
A - Definitely YES	59	48,4%
B - More YES than NO	50	41,0%
C - More NO than YES	11	9,0%
D - Definitely NO	2	1,6%
Total	122	100%
NA	12	



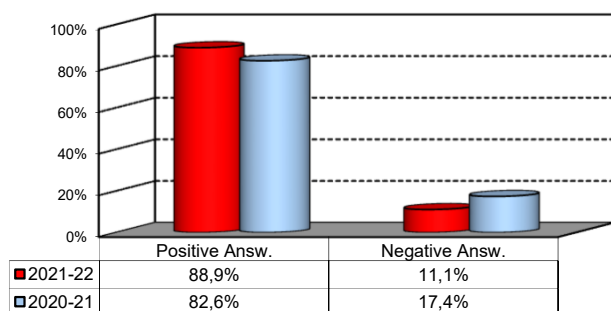
^: During the pandemic, students were given the opportunity to replace the mandatory internship with an alternative activity called Career Start Pack. It consists in an elective exam integrated with mandatory participation in the virtual career orientation path

General satisfaction and short-term plans

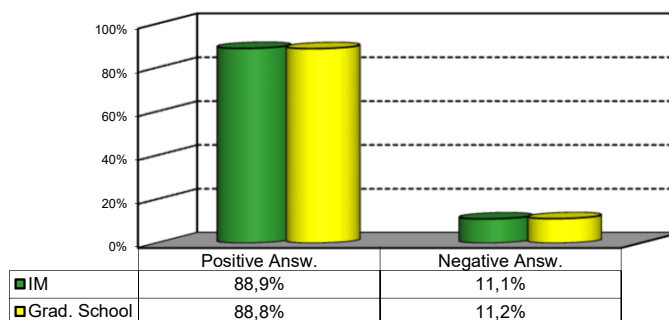
1) Are you satisfied overall with the study program you attended?

Answers	Italian		Non Italian		Total	
	a.v.	%	a.v.	%	a.v.	%
A - Definitely YES	38	44,7%	27	54,0%	65	48,1%
B - More YES than NO	35	41,2%	20	40,0%	55	40,7%
C - More NO than YES	11	12,9%	3	6,0%	14	10,4%
D - Definitely NO	1	1,2%	0	0,0%	1	0,7%
Total	85	100%	50	100%	135	100%
NA	2		1		3	

Over time comparison



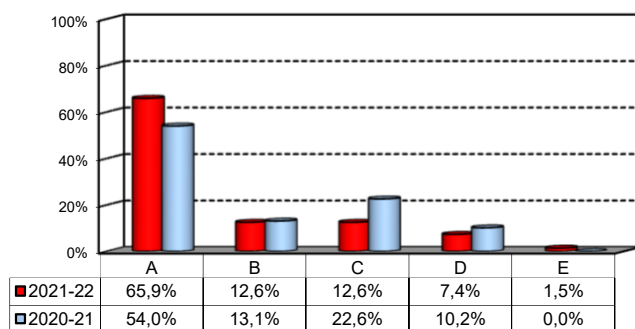
Comparison with the overall School data



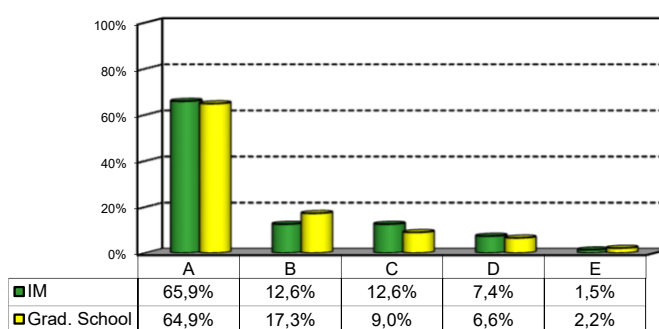
2a) If you could go back in time, would you enroll in the University again?

Answers	Italian		Non Italian		Total	
	v.a.	%	v.a.	%	v.a.	%
A-YES, in the same program at this University	54	63,5%	35	70,0%	89	65,9%
B-YES, in another program at this University	9	10,6%	8	16,0%	17	12,6%
C-YES, in the same program but at another University	15	17,6%	2	4,0%	17	12,6%
D-YES, in another program at another University	6	7,1%	4	8,0%	10	7,4%
E-NO, I would not enrol in university anymore	1	1,2%	1	2,0%	2	1,5%
Total	85	100%	50	100%	135	100%
NA	2		1		3	

Over time comparison



Comparison with the overall School data



General satisfaction and short-term plans

(In case of answer "B" to item no.2a)

2b) Which program would you enroll at this University?

MSc	a.v.	%
ACME	0	0,0%
AFC	1	8,3%
FIN	4	33,3%
CLELI	0	0,0%
ESS	0	0,0%
EMIT	2	16,7%
GIO	0	0,0%
IM	3	25,0%
M	1	8,3%
MM	1	8,3%
CYBER	0	0,0%
Total	12	100%
NA	5	

2c) Why would you make a different choice?

(In case of answer "B", "C", "D" or "E" to item no.2a)

Answers	a.v.	% 2021-22	% 2020-21
A - My interest has changed over time / I discovered that I have different attitudes	19	44,2%	24,0%
B -The MS program did not satisfy my expectations	12	27,9%	52,0%
C I would have preferred to attend the same MS program but taught in English	0	0,0%	0,0%
D - Other reasons	12	27,9%	24,0%
Total	43	100%	100%
NA	3		

General satisfaction and short-term plans

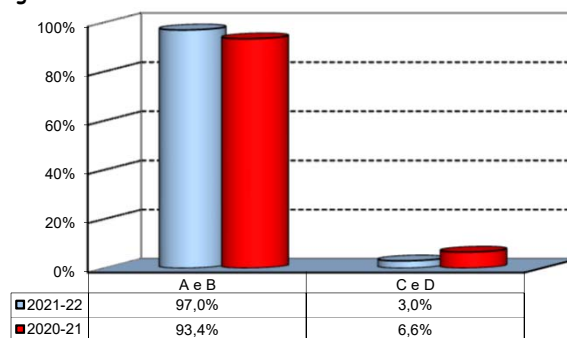
D- Other reasons:

Avendo studiato management in triennale, CEMS mi ha permesso di approfondire le mie conoscenze. Tuttavia, conoscere altri ambiti mi avrebbe permesso di ampliare il mio portfolio di conoscenze.
Avrei preferito fare la magistrale all'estero
Avrei preferito frequentare un corso all'estero della durata di 1 anno
Avrei preferito partire per il DDIM invece che seguire online
Avrei voluto frequentare un corso di laurea interamente all'estero
Bocconi administration did not communicate well with my home university, delayed communication and the refusal to accommodate international students cost me and my family thousands of dollars. Curriculum was focused on memorization and not application.
I did not know about CEMS, and did not think there were two separate classes for MSc International Management. I would enroll in MSc IM/CEMS.
I did not receive the interpersonal experience that I expected
I spent 2000e for VISA ASSISTANCE, HOUSING AND IN LOCO ASSISTANCE for DDIM and I will never see the money back, while peers at Luiss didn't spend this 2k. The answer from professor Perretti was gclYou have a double degree, you paid for that no complaints gcl0
I would have liked to have another in person studying experience abroad
Il lavoro a un mondo diverso, In Bocconi impari a studiare non a lavorare.
International opportunity for a semester abroad - not possible in China MiM under circumstances.
Not only it was impossible to go to China (not Bocconi's fault), but the activities organized for the China MiM were insignificant.
Per poter vivere un'esperienza all'estero ed eventualmente anticipare di un anno l'ingresso nel mondo del lavoro
Taken advantage of international experience
The courses were similar or even less in-depth than the bachelor courses that I have taken at RSM Erasmus University Rotterdam, and therefore do not add the academic learning that I expected from a top ranked university's Master Program
Tutti gli altri corsi Bocconi hanno offerto la possibilita' di svolgere un'esperienza all'estero. Anche gli studenti del nostro stesso corso ma dell'anno accademico precedente e successivo, hanno avuto l'opportunita' di fare esperienza all'estero. Noi no.
Eccessivo peso dato allo studio rispetto ad attività pratiche, a progetti svolti con aziende reali, a consigli e indicazioni pratiche di career planning, come invece ho riscontrato accadere in università estere.
Bocconi is becoming "old" with its focus only on grades and very heavy academic leaving little room and time for their students to discover themselves and evaluate different work opportunities from the standard consulting, IB, or multinational corporates.
Avrei preferito un corso di laurea di durata più breve in quanto l'ultimo anno l'ho trovato piuttosto vuoto dal punto di vista degli esami e avrei preferito fare un'esperienza lavorativa senza il peso di corsi ancora da frequentare.

Infrastructure: Classrooms, Library And Facilities

1) What is your opinion about the classrooms where lessons and other teaching activities have been held?*

Answers	a.v.	%
A - Always or nearly always adequate	97	71,9%
B - Often adequate	31	23,0%
C - Rarely adequate	4	3,0%
D - Never adequate	0	0,0%
E - I did not use them	3	2,2%
Total	135	100%
NA	3	

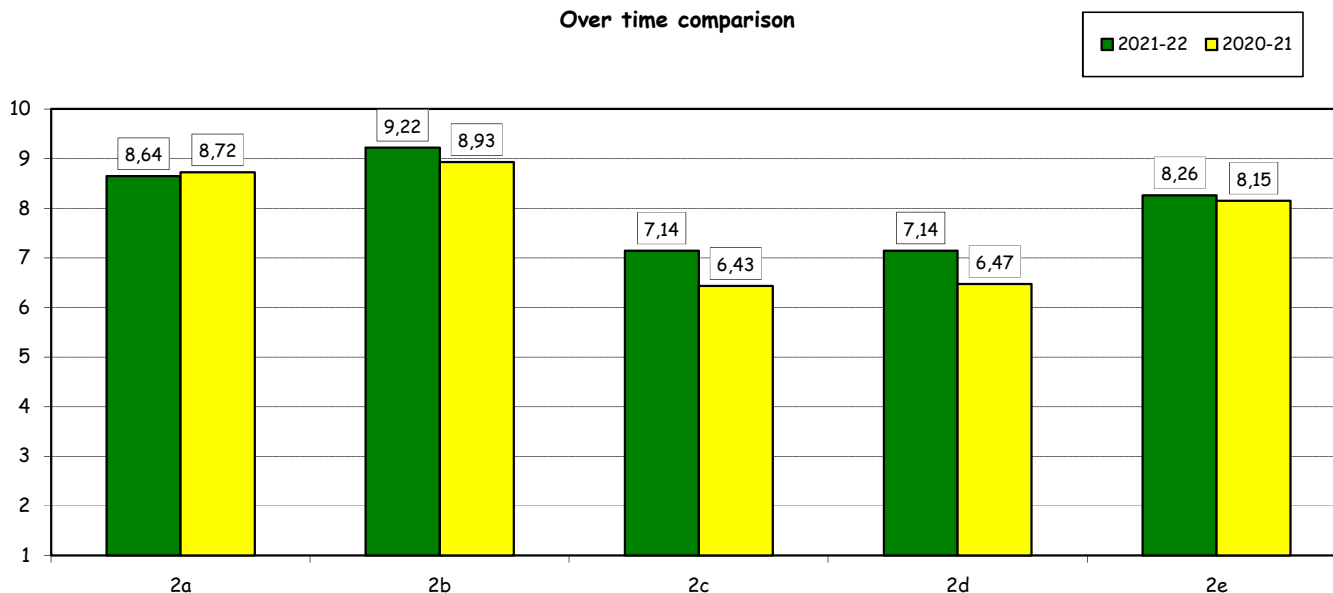


2) How would you evaluate:

(In case of answer "A", "B", "C" or "D" to item no.1)

Answers		Negative				Positive				Total		NA	N.R.
		1-2		3-4-5		6-7-8		9-10					
Item		a.v.	%	a.v.	%	a.v.	%	a.v.	%	a.v.	%		
a) The adequacy of the audio and multimedia systems (e.g. instructor's computer, projectors, video players) installed in the classrooms.		1	0,8	2	1,5	51	38,6	78	59,1	132	100,0		6
b) The cleanliness of classrooms and of other common areas on campus (corridors, halls, study rooms).		0	0,0	2	1,5	28	21,1	103	77,4	133	100,0		5
c) The adequacy of the amount of areas/seats reserved to individual study in the University Library.		13	9,8	19	14,3	49	36,8	52	39,1	133	100,0	0	5
d) The adequacy of the amount of areas/seats reserved to individual study in other buildings on campus.		11	8,3	23	17,4	48	36,4	50	37,9	132	100,0	0	6
e) The clarity and adequacy of the signage system on campus.		3	2,3	12	9,2	47	35,9	69	52,7	131	100,0		7

Over time comparison

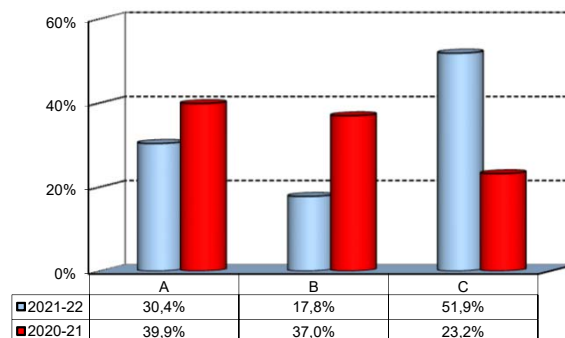


(*): the percentage shown on the graphs is calculated by excluding the responses of those who declare that they have not used the service.

Infrastructure: Classrooms, Library And Facilities

3) What is your overall opinion on the PC Labs and IT facilities provided by the University?

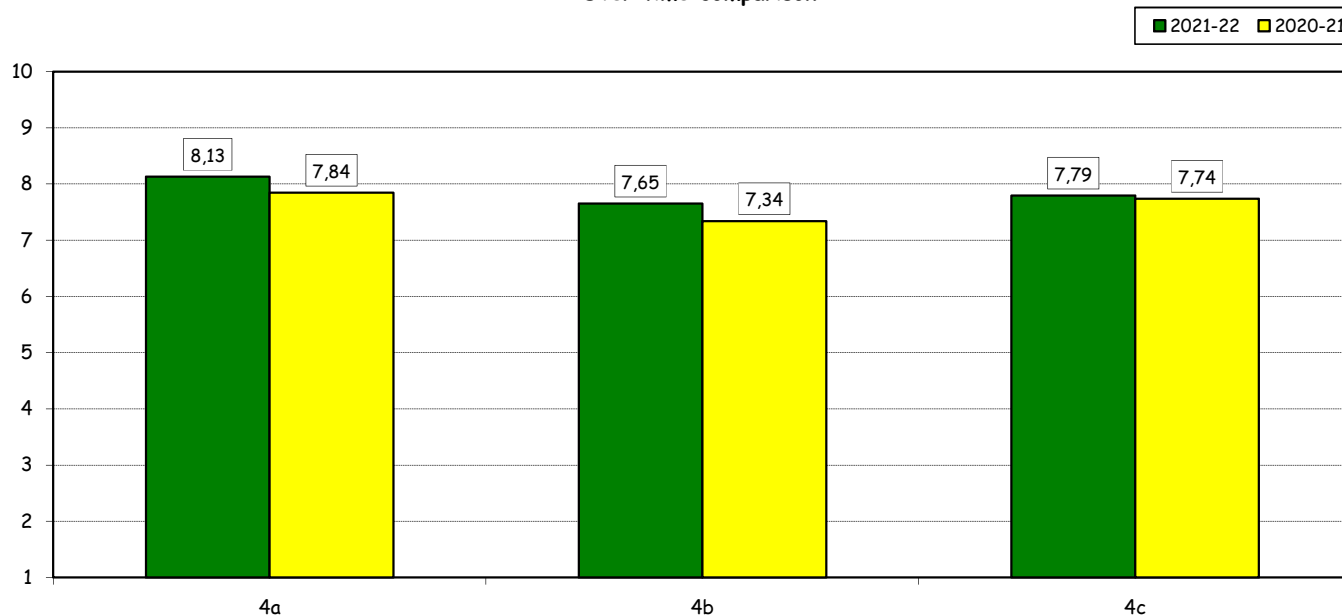
Answers	a.v.	%
A- Adequate in number	41	30,4%
B- Inadequate in number	24	17,8%
C- Never used	70	51,9%
Total	135	100%
NA	3	



4) How do you evaluate:

Answers		Negative				Positive				Total		N.R.
		1-2		3-4-5		6-7-8		9-10				
Item		a.v.	%	a.v.	%	a.v.	%	a.v.	%	a.v.	%	
a) The availability of technical staff supporting students (Tutors) in PC Labs.*		2	3,1	4	6,3	27	42,2	31	48,4	64	100,0	1
b)The convenience of the PC Labs' opening hours.*		4	6,3	5	7,9	30	47,6	24	38,1	63	100,0	2
c) The level of accessibility and usability of the University's IT services (Internet access points, Punto Blu, Virtual Punto Blu, wireless connection).		2	1,5	13	9,8	67	50,4	51	38,3	133	100,0	2

Over time comparison

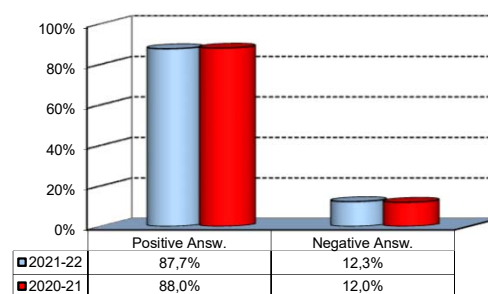


(*): Only in case of answer "A" or "B" to item no.3

Infrastructure: Classrooms, Library And Facilities

5) What is your overall opinion on the Library's services, such as support for individual study?*

Answers	a.v.	%
A - Very Positive	40	29,6%
B - Quite positive	60	44,4%
C - Quite negative	11	8,1%
D - Very Negative	3	2,2%
E - Never used	21	15,6%
Total	135	100%
NA	3	

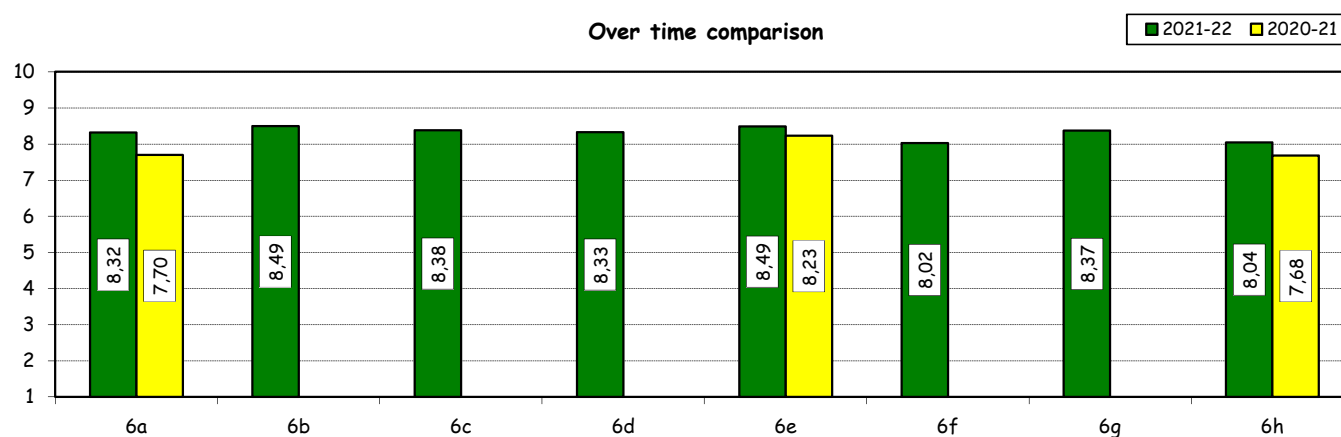


6) How would you evaluate:

(In case of answer "A", "B", "C" or "D" to item no. 5)

Item	Answers	Negative				Positive				Total		N.A.
		1-2		3-4-5		6-7-8		9-10		a.v.	%	a.v.
		a.v.	%	a.v.	%	a.v.	%	a.v.	%			
a) The convenience of the Library's opening hours and access to its main services.		2	2,1	1	1,0	44	45,4	50	51,5	97	100,0	17
b) Range of subjects covered in hardcopy collections (books and journals) compared to your needs of study and research		1	1,0	1	1,0	41	42,3	54	55,7	97	100,0	17
c) The relevance and updating of online collections (e-books, e-journals, databases) compared to your needs of study and research		0	0,0	3	3,5	40	47,1	42	49,4	85	100,0	29
d) The ease of use of search tools available on the Library website		0	0,0	2	2,3	43	48,9	43	48,9	88	100,0	26
e) The assistance provided by the Library staff		0	0,0	0	0,0	44	47,8	48	52,2	92	100,0	22
f) Availability of documents (textbooks, articles, chapters, case studies, etc.) used in individual courses		1	1,0	7	7,3	47	49,0	41	42,7	96	100,0	18
g) The Library website as a source of information on the services offered and as a point of access for resources		0	0,0	1	1,1	43	47,8	46	51,1	90	100,0	24
h) The usefulness of workshops offered by the Library to understand how to use the resources available (catalogues, e-journals, databases, etc.)		0	0,0	2	2,5	48	60,8	29	36,7	79	100,0	35

Over time comparison



(*): the percentage shown on the graphs is calculated by excluding the responses of those who declare that they have not used the service.